



Licensing and Advertisement



Property Valuation and Assessment



Local Authority  
Geographic Information System (LAGIS)



Facility Management



Building Control

## Geographic Intelligence in Local Government

LAGIS takes advantage of recent advances in GIS technology to provide a seamless single system that addresses the wide range of day-to-day operational and managerial processes of Local Authorities. It offers Local Authorities a “quick-start” to computerise their processes within a framework that is consistent with the way Local Authorities function and operate.

Through standard data formats and processes built into LAGIS, users will find that they become part of a community of Local Authority Users who share not only data, but also standard business processes and best practices.

# Benefits

- Faster decision-making and improved responsiveness to public
- Improvement in the quality and delivery of services
- Geospatial data resource sharing in a fast, secure and easy manner
- Productivity gains by greatly reducing the redundant, laborious tasks in developing land use and ownership information

# LAGIS Modules

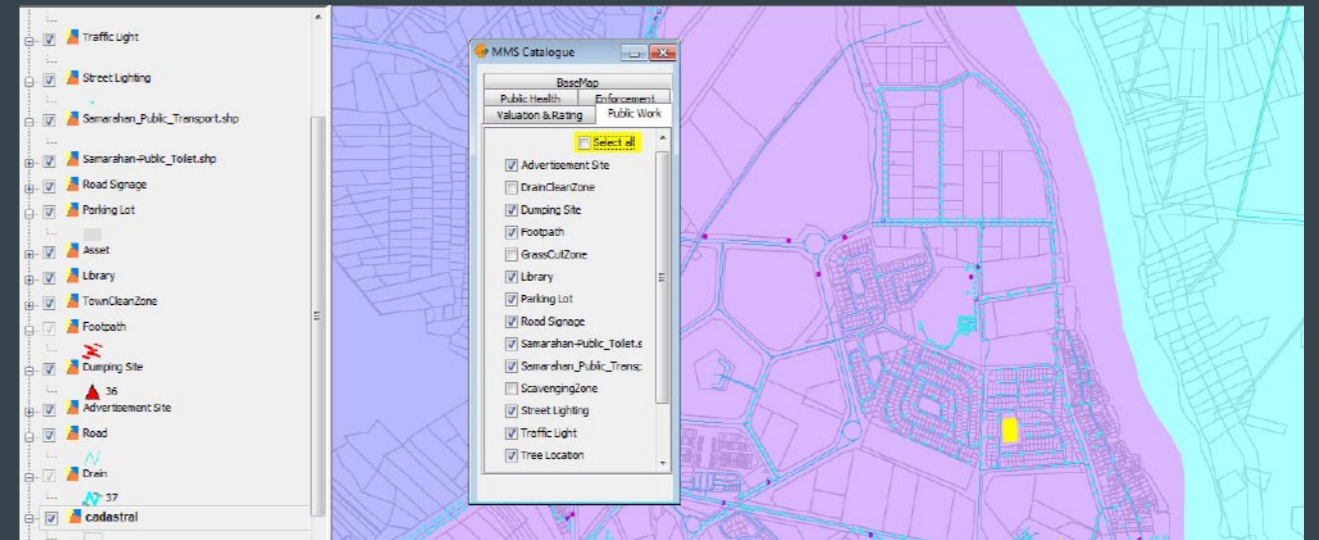
LAGIS is divided into two components - GIS Centric and GIS Enabled. The GIS Centric modules enable users to perform their business operations within the GIS environment while the GIS enabled modules allow the GIS system to be integrated with the transactional processing system.

LAGIS Product Overview			
GIS CENTRIC		GIS ENABLED	
Field Data Collector	Map Management	Building Control	Rating & Billing
Asset & Facility	Landscaping	Valuation	Licensing
Oil Palm Levy	Illegal Extension	Advertisement	Public Service Feedback
		Enforcement	Contract Management
		Project Development	Parking Management

# Key Features

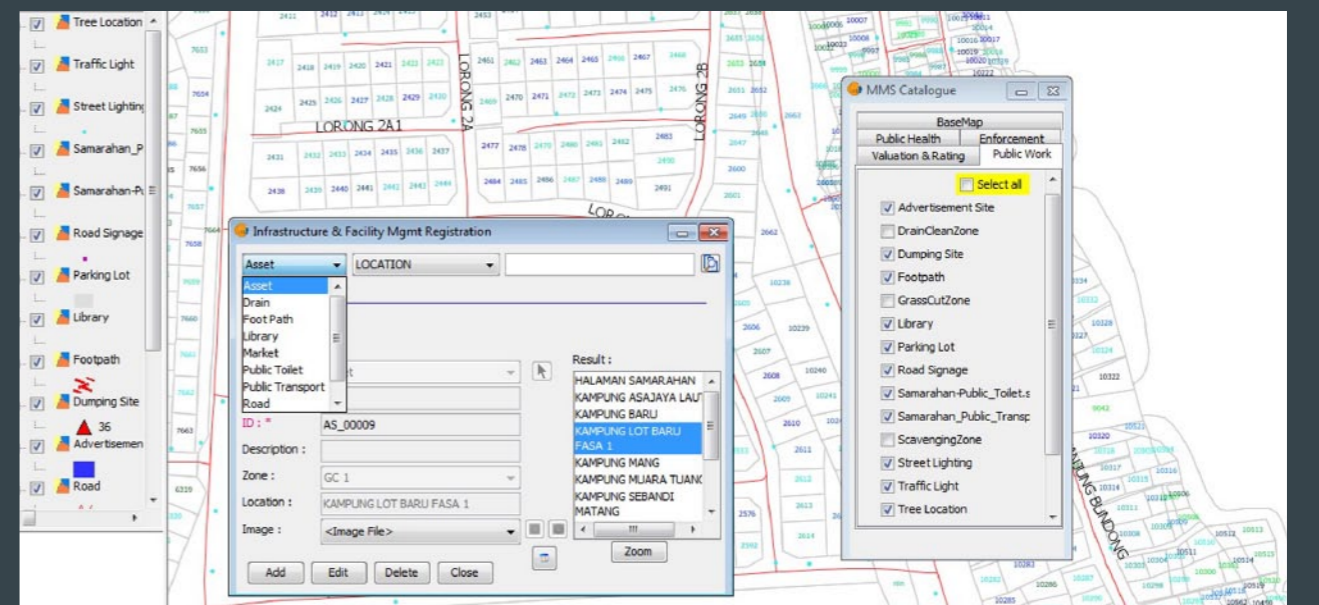
## 1. Map Management

- Acts as the core module to store and manage all basemap layers for LAGIS
- Allows map searching, viewing, overlay and query of geodatabase information through an easy to use Graphic User Interface (GUI)
- Users can add comments and graphical notations to the map
- No duplication of data collection and management
- Extract and print customized maps and reports easily



## 2. Facility Management

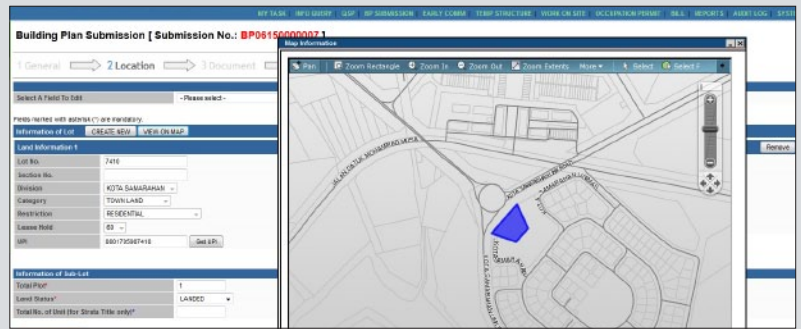
- Track and Monitor facilities and assets such as parks, libraries, stadiums, swimming pools, markets stalls, etc.
- Fast look-up and easy information update of facilities such as locality, dimensions, last date of maintenance, repair cost, etc.
- Information can be viewed on the map with tabular information related to the asset or facility
- Enables analysis of maintenance and repair history
- Database and tools to assist in town development planning and better management of maintenance schedule



# Key Features

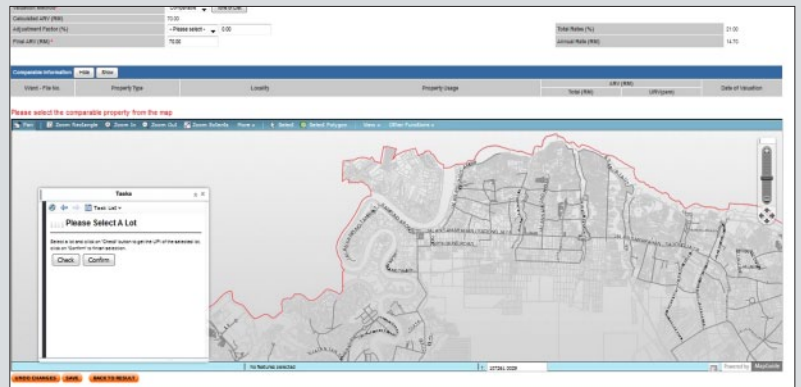
## 3. Building Control

- Maintain and track approved building plans and Occupational Permit (OP)
- Store and Organize submitted plans in digital format
- Facilitate faster verification of illegal structures under jurisdiction of the Local Authority



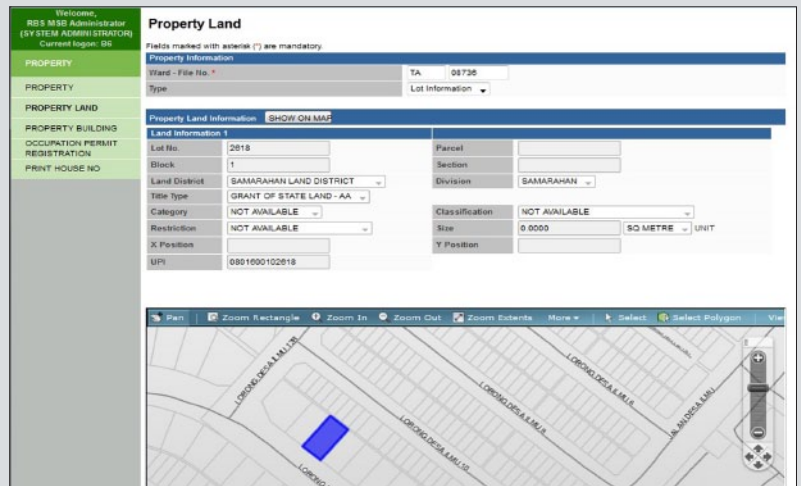
## 4. Valuation

- Geovisualisation of properties and buildings
- View property information such as ownership, land title of household, conditions, lease terms
- View valuation information such as Unit Rental Value (URV) and Annual Rateable Value (ARV) rates for each property
- Provides tools for valuation and property assessment (comparable analysis of each property)



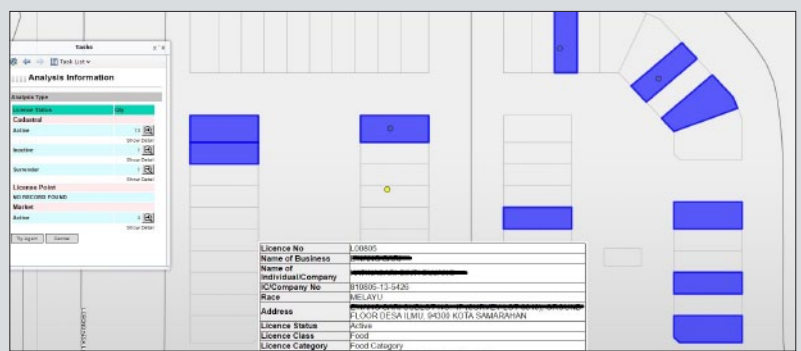
## 5. Rating & Billing

- Geovisualisation of properties and buildings
- Easy and simple administration of Rating Ward boundaries and Local Authority Boundaries
- Fast and easy search of property database details; service type, assessment bill, outstanding amount, rebate information, owner profile, etc
- Analyze and manage assessment rate revenue by area or collections



## 6. Licensing

- Geovisualisation of license premises
- Spatial search and query of license details such as License Number, Status of License, Race, Name/Company, Type of License, Name of Market, etc



## Sales Contact:

- Kuala Lumpur** Tel: (60) 3-8943 3330
- Penang** Tel: (60) 4-638 4818
- Johor Bharu** Tel: (60) 7-351 6721
- Kuching** Tel: (60) 82-366 499
- Miri** Tel: (60) 85-426 117
- Kota Kinabalu** Tel: (60) 88-734 570
- Brunei** Tel: (673) 2652056